

Accepted Date : 10-Jan-2014  
Article type : Original

Corresponding author email id: snus.collaboration@gmail.com

## Snus (Swedish smokeless tobacco) use and risk of stroke: Pooled Analyses of Incidence and Survival

Jenny Hansson<sup>1</sup>, Maria Rosaria Galanti<sup>1</sup>, Maria-Pia Hergens<sup>2</sup>, Peeter Fredlund<sup>3</sup>, Anders Ahlbom<sup>4</sup>, Lars Alfredsson<sup>4</sup>, Rino Bellocco<sup>5,6</sup>, Gunnar Engström<sup>7</sup>, Marie Eriksson<sup>8</sup>, Johan Hallqvist<sup>9</sup>, Bo Hedblad<sup>7</sup>, Jan-Håkan Jansson<sup>10</sup>, Nancy L Pedersen<sup>6</sup>, Ylva Trolle Lagerros<sup>11</sup>, Per-Olof Östergren<sup>12</sup> & Cecilia Magnusson<sup>1</sup>

From the <sup>1</sup>Department of Public Health Sciences, Karolinska Institutet, Stockholm, Sweden;

<sup>2</sup>Department of Communicable Disease Control and Prevention, Stockholm County Council,

Sweden; <sup>3</sup>Centre for Epidemiology and Community Medicine, Stockholm County Council,

Sweden; <sup>4</sup>Institute of Environmental Medicine, Karolinska Institutet, Stockholm, Sweden;

<sup>5</sup>Department of Statistics and Qualitative Methods, University of Milano-Bicocca, Italy;

<sup>6</sup>Department of Medical Epidemiology and Biostatistics, Karolinska Institutet, Stockholm,

Sweden; <sup>7</sup>Department of Clinical Sciences, Lund University, Malmö, Sweden; <sup>8</sup>Department of

Statistics, Umeå School of Business and Economics, Umeå University, Umeå, Sweden;

<sup>9</sup>Department of Public Health and Caring Sciences, Uppsala University, Uppsala, Sweden;

<sup>10</sup>Department of Public Health and Clinical Medicine, Umeå University, Umeå, Sweden;

<sup>11</sup>Department of Medicine, Unit of Clinical Epidemiology, Karolinska Institutet, Stockholm,

This article has been accepted for publication and undergone full peer review but has not been through the copyediting, typesetting, pagination and proofreading process, which may lead to differences between this version and the Version of Record. Please cite this article as doi: 10.1111/joim.12219

This article is protected by copyright. All rights reserved.

Sweden; and <sup>12</sup>Social Medicine and Global Health, Department of Clinical Sciences in Malmö, Lund University, Malmö, Sweden.

Running headline: Snus use and risk of stroke

## Abstract

**Background.** Snus is a moist smokeless tobacco product with a high nicotine content. Its use has a short-term effect on the cardiovascular system, but the relationship between snus use and stroke is unclear.

**Objective.** The aim of this study was to assess the associations between use of snus and incidence of and survival after stroke, both overall and according to subtypes.

**Methods.** Pooled analyses of eight Swedish prospective cohort studies were conducted, including 130 485 men who never smoked. We estimated hazard ratios (HRs) with 95% confidence intervals (CIs) of incidence and death after diagnosis using Cox proportional hazard regression models, and case fatality and survival using logistic regression and Kaplan–Meier methods, respectively.

**Results.** No associations were observed between the use of snus and the risk of overall stroke (HR 1.04, 95% CI 0.92–1.17) or of any of the stroke subtypes. The odds ratio (OR) of 28-day case fatality was 1.42 (95% CI 0.99–2.04) among users of snus who had experienced a stroke, and the HR of death during the follow-up period was 1.32 (95% CI 1.08–1.61).

**Conclusion.** Use of snus was not associated with the risk of stroke. Hence, nicotine is unlikely to contribute importantly to the pathophysiology of stroke. However, case fatality was increased in snus users, compared to non-users, but further studies are needed to determine any possible causal mechanisms.

Keywords: smokeless tobacco, snus, stroke.

## Introduction

Snus is a moist smokeless tobacco product. Although this type of smokeless tobacco has only recently been introduced in the USA [1], it has a long tradition of use among Scandinavians. In particular, the prevalence of snus use is high among Swedish men where the use of snus exceeds that of cigarettes (20% vs. 12%)[2]. In light of this growing trend in snus use, there is a need to clarify its health effects. The nicotine yield from snus use is equivalent to that of cigarette smoking [3, 4], and its use triggers vascular constriction and affects both heart rate and blood pressure [4]. Evidence suggests that snus use may be associated with hypertension [5–8] and fatal myocardial infarction [9], but not with ischaemic heart disease overall [6, 9–17]. Few studies have investigated the relationship between use of snus and stroke, particularly with regard to subtypes of stroke. To date, there is no evidence to suggest any increased risk of either incident stroke overall [15–19], or haemorrhagic or ischaemic stroke specifically [19]. Relationships between the use of snus and fatal stroke, however, are reported to vary between subtypes of disease. Although no increased risk of fatal haemorrhagic stroke has been found, both the risk of and fatality after ischaemic stroke seem to be augmented [19]. The aim of the present study was to add to the existing body of evidence by investigating several aspects of the relationship between snus use and stroke in men, using the largest available sample to date. Specifically, we assessed the association between use of snus and risk of and survival after stroke, both overall and by subtype.

## Methods

### *Setting and participants*

The Swedish Collaboration on Health Effects of Snus Use is a national pooling project. Briefly, Swedish prospective studies with information on snus use and cigarette smoking were eligible for inclusion. In total, eight studies [9, 20–26] contributed data, with periods of recruitment ranging from 1978 to 2004. Details of the individual studies have been reported previously [10]. The study was approved by the Regional Ethical Review Board in Stockholm, Sweden.

### *Data collection*

Self-reported tobacco use and self-reported or measured height and weight [to calculate body mass index (BMI)] were ascertained from each study, while self-reported level of education was available and collected from all studies except one [9]. We have previously presented further details of the data collection [10]. Outcome was assessed via record linkage to the National Inpatient Register [27] and the Cause of Death Register [28] using subjects' personal identification numbers [29]. These registers cover virtually all inpatient care and deaths in Sweden since 1987 and 1961, respectively. For each hospital admission and death, information was obtained about the primary and secondary admission diagnoses and underlying causes of death [coded according to the International Classification of Diseases (ICD) [30]].

### *Statistical analyses*

The associations between snus use and incident stroke, and overall survival after stroke, were estimated using Cox proportional hazard regression models. Study-specific and pooled hazard ratios (HRs) with 95% confidence intervals (CIs) were calculated using attained age or age at

diagnosis as the time scale. The supremum test [31] was used to assess the proportionality assumption, and the Kaplan–Meier method was used to estimate and plot the survival distribution after first stroke among current and non-current snus users. Differences in survival were assessed using the log rank test. Case fatality (defined as the probability of death within 28 days of diagnosis) among incident cases of stroke during follow-up was estimated using logistic regression models and presented as the odds ratio (OR) and corresponding 95% CI. We adjusted for BMI, and then additionally for educational level in separate analyses in the subsample in which this information was available [20–23,25, 26, 32]. Analyses of case fatality and risk of death were also adjusted for year of diagnosis. Analyses were stratified by study and conducted using SAS version 9.2 (SAS Institute Inc., Cary, NC, USA). We tested for heterogeneity across the studies using  $I^2$  statistics.

Use of snus was primarily classified as current and non-current use at baseline. Where information was available, current use was further categorized according to duration (<20 or >20 years) [9, 21, 23, 26] and extent of use (less than four, four to six or seven or more cans per week) [9, 20–23, 26]. Information on former snus use was also available in six cohorts [9, 21–24, 26]. Smoking was considered as use of any type of smoked tobacco (cigarettes, pipe and cigars), regardless of timing. BMI was categorized according to the World Health Organisation classification [33], and educational level as primary school, upper secondary school or university.

The endpoint during follow-up was first ever stroke, which was defined as ICD codes I60–I61 (haemorrhagic), I63 (ischaemic) and I64 (unspecified) in ICD-10<sup>th</sup> edition, 430-431; 434 and 436 in ICD-9<sup>th</sup> edition and corresponding codes in the 8<sup>th</sup> and 7<sup>th</sup> edition. Main and secondary diagnoses as well as the underlying cause of death were considered. Participants with a

Accepted Article

history of stroke (defined as a main or secondary diagnosis of stroke according to the National Inpatient Register) were censored at baseline. Subjects were recruited from 1978 to 2004, and the duration of follow-up was 5 to 29 years. Each participant contributed person-years to the analysis from the date of entry in the individual study until diagnosis of stroke, death or the end of follow-up, whichever occurred first. In analyses of ischaemic stroke, haemorrhagic or unspecified strokes led to censoring, and vice versa.

Analyses were restricted to men who had never smoked, and non-current snus users served as the reference group. Additional analyses were performed excluding the Construction Workers Cohort, as participants in this study constituted 76% of the sample. In subanalyses, we also restricted the length of follow-up to a maximum of 10 years in order to investigate whether a potential misclassification of exposure over time attenuated the associations. Further, we stratified the analyses by period of recruitment (1978–1984 or 1985–2004) to determine whether the findings were dependent on changes in diagnostic methods or types of snus use marketed over time. To test the influence of the inclusion of secondary diagnoses of stroke according to the National Inpatient Register, we also conducted an analysis with only primary admissions and underlying causes of death as endpoints. Lastly, we assessed the impact of including former snus users in the reference group by analysing current snus users versus never users of tobacco (also excluding former snus users).

## Results

The basis of the analytical sample is shown in Fig. 1. A total of 130 485 men without a history of smoking or of prior stroke at baseline were included in the study; 32 542 (25%) of them reported current use of snus. At baseline, snus users were younger than non-current snus users (mean age 28 and 37 years, respectively). Further baseline characteristics are shown

according to snus use in Table 1 and according to cohort in Table 2. Overall, 2934 new cases of stroke were observed during a total of 2 266 921 person-years of follow-up (mean follow-up time 17 years), including 1953 cases of ischaemic stroke, 581 of haemorrhagic stroke and 400 of unspecified stroke. Mean age at diagnosis was 62 and 68 years among current and non-current snus users, respectively ( $P < 0.0001$ ).

Pooled and study-specific HRs of stroke overall according to snus use at baseline are presented in Fig. 2. After adjustment for age and BMI, the HR of stroke overall was 1.04 (95% CI 0.92–1.17). There were no significant associations between snus use and risk of ischaemic stroke (HR 1.06, 95% CI 0.91–1.23), haemorrhagic stroke (HR 0.94, 95% CI 0.73–1.22) or unspecified stroke (HR 1.10, 95% CI 0.78–1.54). There were no significant differences between the results from the various studies with regard to any of the subtypes of stroke (data not shown) or overall ( $I^2=32\%$ ). Restriction of follow-up to 10 years resulted in almost identical results compared to the main analyses (HR 1.00, 95% CI 0.80–1.25 for all types of stroke combined). Similar null associations were noted in subgroups defined by period of recruitment, and in analyses restricted to outcomes determined as primary admission diagnoses or underlying causes of death (data not shown). With never tobacco users as the reference group, the HR of overall stroke among current users was 1.01 (95% CI 0.89–1.14) based on 291 exposed cases; among former users, the HR was 0.88 (95% CI 0.64–1.22) based on 39 exposed cases. In additional subanalyses excluding the Construction Workers Cohort, the age- and BMI-adjusted HR for stroke was 1.13 (95% CI 0.79–1.60). This sample allowed additional adjustment for educational level, which also had only a marginal effect on the HR (HR for overall stroke, after adjustment for age, BMI and education: 1.10, 95% CI 0.78–1.57).

There was no evidence of any dose–response relationships with risk of incident stroke according to either extent or duration of snus use (Table 3). Among those individuals who experienced a stroke there was no statistically significant difference in the crude survival rates between current snus users and non-current users (log rank test,  $P = 0.30$ ) ) during the first 10 years of follow-up after a stroke diagnosis (Fig. 3) nor when followed for total time of follow-up (data not shown). The risk of death following a stroke, after adjustment for age, BMI and year of diagnosis, was increased among snus users (HR 1.32, 95% CI 1.08–1.61) based on 115 deaths among exposed cases. This increase was observed both for ischaemic (HR 1.29, 95% CI 1.00–1.67) and haemorrhagic strokes (HR 1.76, 95% CI 1.16–2.67), but did not persist after exclusion of the Construction Workers Cohort, based on 10 exposed cases. The OR for 28-day case fatality was 1.42 (95% CI 0.99–2.04) for overall stroke, based on 41 exposed cases. After exclusion of the Construction Workers Cohort, and adjustment for age, BMI and year of diagnosis, OR was 1.43 (95% CI 0.52–3.92), based on five exposed cases and was slightly increased by including educational level in the model.

## Discussion

Use of snus was not associated with risks of incident ischaemic, haemorrhagic or unspecified stroke in this pooled analysis including over 130 000 men. Our null finding is in agreement with previous reports of no association between use of snus and incident stroke combined [15–19], as well as of haemorrhagic and ischaemic stroke [19]. Case fatality was increased among snus users in our analysis, but this increase was attenuated over time. Few studies have investigated the relationship between snus use and stroke fatality [15, 19, 34]. Two of these studies were not able to demonstrate any statistically significant increased risk among snus users, but these findings were based on small sample sizes [15, 34]. In an update of one of

these studies, an increased risk of fatal ischaemic stroke was found with a higher probability of dying among snus users than non-users after an ischaemic stroke [19].

We identified cases of stroke through national registers [27, 28]. Although diagnostic information from these sources is generally considered to be highly valid [27], there has been criticism of the classification of stroke subtypes [35], and suggestions that further validations are needed [36]. Any such misclassification is likely to be non-differential with regard to exposure, however, and is of little concern in this study, as findings were similar regardless of stroke subtype. Although snus use is relatively stable [37], misclassification of current exposure could be expected to increase over time primarily due to cessation but also to new onset of use. Because the timing of exposure to smoked tobacco is known to be of great importance with regard to the effect on the cardiovascular system [38], we conducted a subanalysis in which we restricted follow-up to 10 years, in order to minimise exposure misclassification. Findings from this analysis, however, did not differ from the main results. Furthermore, there was no evidence of any associations between snus use and risk of stroke in sensitivity analyses excluding either the Construction Workers Cohort or all former snus users, or in analyses stratified according to period of recruitment.

The strengths of this study include its prospective design and large sample size, which enabled analyses of specific subtypes of stroke to be conducted and dose–response relationships to be evaluated. The study limitations include restriction of the population to men. This was necessary due to the small number of exposed women, and lack of opportunity to investigate the influence of all potential confounders. A second limitation is that the Construction Workers Cohort contributes a large proportion of cases, thus potentially influencing the overall results. However, we conducted analyses after exclusion of this cohort

Accepted Article

and demonstrated essentially the same results. Snus users differ, to varying degrees according to time periods and settings, from non-tobacco users with regard to certain lifestyle and social characteristics. Snus use has been associated with smoking [17, 37], alcohol consumption and low intake of fruit and vegetables [39]; however, results of studies investigating the association between snus use and being overweight or obese [6, 7, 32, 40, 41], as well as the level of physical activity [39, 42], are conflicting. Snus use has also been associated with low socioeconomic position [37, 39]. Some of these variables are known risk factors for ischaemic and haemorrhagic stroke [43], and higher incidence and case-fatality rates of stroke have been reported among lower socioeconomic groups [44]. Hence, these factors could be considered possible confounders. We were able to account for the effects of age, smoking, BMI and, to some extent, socioeconomic position (using educational level as a proxy). We considered the possibility that BMI acts as a mediator in any potential association between snus use and stroke, and that adjustment would induce bias. However, inclusion of BMI did not materially change the results. To avoid potential confounding by smoking, all analyses were restricted to never smokers.

Confounding by socioeconomic or lifestyle factors may explain our finding of an increased case-fatality rate. For example, low educational level [45] and self-reported financial strain [46] have been associated in Swedish studies with refraining from seeking healthcare. These socioeconomic characteristics are, more common among snus users than non-users of tobacco [37, 39]. However, the possibility of a true negative impact of snus use on stroke survival cannot be excluded. Exposure to nicotine is usually continuous among snus users. It is possible that the haemodynamic effects of this continuous exposure may explain the increased risk of mortality after stroke observed in this study, and the previously reported increased mortality after acute myocardial infarction [47].

The levels of nicotine yield from snus use and cigarette smoking are similar [3, 4], and the relationship between smoking and risk of stroke is well established [43]. If nicotine was indeed an important contributor to the pathophysiology of smoking-related stroke, a similar impact on stroke incidence would be expected from the use of snus. Our findings thus indicate that other substances are more likely to have a causal role in the pathway between smoking and stroke. In conclusion, we found no association between the use of snus and risk of incident stroke. Case fatality seemed to be increased among snus users, and this association was strongest during the first weeks after diagnosis; nevertheless confounding as an explanation of the relationship cannot be ruled out.

#### **Conflict of interest statement**

The authors have no competing interests to declare.

#### **Acknowledgements**

This study was supported by Stockholm County Council, the Swedish Research Council (grant no. 2007-3185), the National Institute of Public Health (grant no. 2008/188) and the Swedish Council for Working Life and Social Research (grant no. 2010-0546).

#### **References**

1. Regan AK, Dube SR, Arrazola R: **Smokeless and flavored tobacco products in the U.S.: 2009 Styles survey results.** *Am J Prev Med* 2012, **42**(1):29-36.
2. **Swedish National Institute of Public Health. Tobacco habits - results 2010.** Available online:<http://www.fhi.se/en/Highlights/National-Survey-of-Public-Health/Living-habits/Tobacco-habits/> [accessed March 19 2012].
3. Holm H, Jarvis MJ, Russell MA, Feyerabend C: **Nicotine intake and dependence in Swedish snuff takers.** *Psychopharmacology (Berl)* 1992, **108**(4):507-511.
4. Benowitz NL, Porchet H, Sheiner L, Jacob P, 3rd: **Nicotine absorption and cardiovascular effects with smokeless tobacco use: comparison with cigarettes and nicotine gum.** *Clin Pharmacol Ther* 1988, **44**(1):23-28.

- Accepted Article
5. Hergens MP, Lambe M, Pershagen G, Ye W: **Risk of hypertension amongst Swedish male snuff users: a prospective study.** *Journal of internal medicine* 2008, **264**(2):187-194.
  6. Hergens MP, Ahlbom A, Andersson T, Pershagen G: **Swedish moist snuff and myocardial infarction among men.** *Epidemiology (Cambridge, Mass)* 2005, **16**(1):12-16.
  7. Norberg M, Stenlund H, Lindahl B, Boman K, Weinehall L: **Contribution of Swedish moist snuff to the metabolic syndrome: a wolf in sheep's clothing?** *Scandinavian journal of public health* 2006, **34**(6):576-583.
  8. Bolinder GM, Ahlborg BO, Lindell JH: **Use of smokeless tobacco: blood pressure elevation and other health hazards found in a large-scale population survey.** *Journal of internal medicine* 1992, **232**(4):327-334.
  9. Hergens MP, Alfredsson L, Bolinder G, Lambe M, Pershagen G, Ye W: **Long-term use of Swedish moist snuff and the risk of myocardial infarction amongst men.** *Journal of internal medicine* 2007, **262**(3):351-359.
  10. Hansson J, Galanti MR, Hergens MP, Fredlund P, Ahlbom A, Alfredsson L, Bellocco R, Eriksson M, Hallqvist J, Hedblad B *et al*: **Use of snus and acute myocardial infarction: pooled analysis of eight prospective observational studies.** *Eur J Epidemiol* 2012.
  11. Huhtasaari F, Asplund K, Lundberg V, Stegmayr B, Wester PO: **Tobacco and myocardial infarction: is snuff less dangerous than cigarettes?** *BMJ (Clinical research ed)* 1992, **305**(6864):1252-1256.
  12. Huhtasaari F, Lundberg V, Eliasson M, Janlert U, Asplund K: **Smokeless tobacco as a possible risk factor for myocardial infarction: a population-based study in middle-aged men.** *Journal of the American College of Cardiology* 1999, **34**(6):1784-1790.
  13. Johansson SE, Sundquist K, Qvist J, Sundquist J: **Smokeless tobacco and coronary heart disease: a 12-year follow-up study.** *Eur J Cardiovasc Prev Rehabil* 2005, **12**(4):387-392.
  14. Wennberg P, Eliasson M, Hallmans G, Johansson L, Boman K, Jansson JH: **The risk of myocardial infarction and sudden cardiac death amongst snuff users with or without a previous history of smoking.** *Journal of internal medicine* 2007, **262**(3):360-367.
  15. Haglund B, Eliasson M, Stenbeck M, Rosen M: **Is moist snuff use associated with excess risk of IHD or stroke? A longitudinal follow-up of snuff users in Sweden.** *Scandinavian journal of public health* 2007, **35**(6):618-622.
  16. Hansson J, Pedersen NL, Galanti MR, Andersson T, Ahlbom A, Hallqvist J, Magnusson C: **Use of snus and risk for cardiovascular disease: results from the Swedish Twin Registry.** *Journal of internal medicine* 2009, **265**(6):717-724.
  17. Janzon E, Hedblad B: **Swedish snuff and incidence of cardiovascular disease. A population-based cohort study.** *BMC cardiovascular disorders* 2009, **9**:21.
  18. Asplund K, Nasic S, Janlert U, Stegmayr B: **Smokeless tobacco as a possible risk factor for stroke in men: a nested case-control study.** *Stroke; a journal of cerebral circulation* 2003, **34**(7):1754-1759.
  19. Hergens MP, Lambe M, Pershagen G, Terent A, Ye W: **Smokeless tobacco and the risk of stroke.** *Epidemiology (Cambridge, Mass)* 2008, **19**(6):794-799.
  20. Manjer J, Carlsson S, Elmstahl S, Gullberg B, Janzon L, Lindstrom M, Mattisson I, Berglund G: **The Malmo Diet and Cancer Study: representativity, cancer incidence and mortality in participants and non-participants.** *Eur J Cancer Prev* 2001, **10**(6):489-499.

- Accepted Article
21. Eriksson M, Holmgren L, Janlert U, Jansson JH, Lundblad D, Stegmayr B, Soderberg S, Eliasson M: **Large improvements in major cardiovascular risk factors in the population of northern Sweden: the MONICA study 1986-2009.** *Journal of internal medicine* 2011, **269**(2):219-231.
  22. Belloc R, Jia C, Ye W, Lagerros YT: **Effects of physical activity, body mass index, waist-to-hip ratio and waist circumference on total mortality risk in the Swedish National March Cohort.** *Eur J Epidemiol* 2010, **25**(11):777-788.
  23. Lichtenstein P, Sullivan PF, Cnattingius S, Gatz M, Johansson S, Carlstrom E, Bjork C, Svartengren M, Wolk A, Klareskog L *et al*: **The Swedish Twin Registry in the third millennium: an update.** *Twin Res Hum Genet* 2006, **9**(6):875-882.
  24. Svensson A, Fredlund P, Laflamme L, Hallqvist J, Alfredsson L, *al. e*: **Cohort Profile: The Stockholm Public Health Cohort** *Int J Epidemiol* 2012, [in press].
  25. Carlsson F, Merlo J, Lindstrom M, Ostergren PO, Lithman T: **Representativity of a postal public health questionnaire survey in Sweden, with special reference to ethnic differences in participation.** *Scandinavian journal of public health* 2006, **34**(2):132-139.
  26. Alfredsson L, Hammar N, Fransson E, de Faire U, Hallqvist J, Knutsson A, Nilsson T, Theorell T, Westerholm P: **Job strain and major risk factors for coronary heart disease among employed males and females in a Swedish study on work, lipids and fibrinogen.** *Scand J Work Environ Health* 2002, **28**(4):238-248.
  27. Ludvigsson JF, Andersson E, Ekbom A, Feychting M, Kim JL, Reuterwall C, Heurgren M, Olausson PO: **External review and validation of the Swedish national inpatient register.** *BMC public health* 2011, **11**:450.
  28. Johansson LA, Westerling R: **Comparing Swedish hospital discharge records with death certificates: implications for mortality statistics.** *International journal of epidemiology* 2000, **29**(3):495-502.
  29. Ludvigsson JF, Otterblad-Olausson P, Pettersson BU, Ekbom A: **The Swedish personal identity number: possibilities and pitfalls in healthcare and medical research.** *European Journal of Epidemiology* 2009, **24**(11):659-667.
  30. **World Health Organization. International Statistical Classification of Diseases and Related Health Problems 10th Revision.** Available online:<http://apps.who.int/classifications/icd10/browse/2010/en> [accessed April 4 2012].
  31. Lin, D. Y., Wei, L. J., and Ying, Z. **Checking the Cox Model with Cumulative Sums of Martingale-Based Residuals.** *Biometrika*. 1993; **80**, 557–572. .
  32. Hansson J, Galanti MR, Magnusson C, Hergens MP: **Weight gain and incident obesity among male snus users.** *BMC public health* 2011, **11**:371.
  33. **World Health Organization. Global Database on Body Mass Index.** Available online:[http://apps.who.int/bmi/index.jsp?introPage=intro\\_3.html](http://apps.who.int/bmi/index.jsp?introPage=intro_3.html) [accessed April 11 2012].
  34. Bolinder G, Alfredsson L, Englund A, de Faire U: **Smokeless tobacco use and increased cardiovascular mortality among Swedish construction workers.** *American journal of public health* 1994, **84**(3):399-404.
  35. Stegmayr B, Asplund K: **Measuring stroke in the population: quality of routine statistics in comparison with a population-based stroke registry.** *Neuroepidemiology* 1992, **11**(4-6):204-213.
  36. Appelros P, Terent A: **Validation of the Swedish inpatient and cause-of-death registers in the context of stroke.** *Acta Neurol Scand* 2011, **123**(4):289-293.

- Accepted Article
37. Norberg M, Malmberg G, Ng N, Brostrom G: **Who is using snus? - Time trends, socioeconomic and geographic characteristics of snus users in the ageing Swedish population.** *BMC public health* 2011, **11**:929.
  38. Doll R, Peto R, Boreham J, Sutherland I: **Mortality in relation to smoking: 50 years' observations on male British doctors.** *BMJ (Clinical research ed)* 2004, **328**(7455):1519.
  39. Engstrom K, Magnusson C, Galanti MR: **Socio-demographic, lifestyle and health characteristics among snus users and dual tobacco users in Stockholm County, Sweden.** *BMC public health* 2010, **10**:619.
  40. Sundbeck M, Grahn M, Lonngren V, Mansson NO, Rastam L, Lindblad U: **Snuff use associated with abdominal obesity in former smokers.** *Scandinavian journal of public health* 2009, **37**(5):487-493.
  41. Rodu B, Stegmayr B, Nasic S, Cole P, Asplund K: **The influence of smoking and smokeless tobacco use on weight amongst men.** *Journal of internal medicine* 2004, **255**(1):102-107.
  42. Mattila VM, Raisamo S, Pihlajamaki H, Mantysaari M, Rimpela A: **Sports activity and the use of cigarettes and snus among young males in Finland in 1999-2010.** *BMC public health* 2012, **12**:230.
  43. O'Donnell MJ, Xavier D, Liu L, Zhang H, Chin SL, Rao-Melacini P, Rangarajan S, Islam S, Pais P, McQueen MJ *et al*: **Risk factors for ischaemic and intracerebral haemorrhagic stroke in 22 countries (the INTERSTROKE study): a case-control study.** *Lancet* 2010, **376**(9735):112-123.
  44. Peltonen M, Rosen M, Lundberg V, Asplund K: **Social patterning of myocardial infarction and stroke in Sweden: incidence and survival.** *Am J Epidemiol* 2000, **151**(3):283-292.
  45. Westin M, Ahs A, Brand Persson K, Westerling R: **A large proportion of Swedish citizens refrain from seeking medical care--lack of confidence in the medical services a plausible explanation?** *Health Policy* 2004, **68**(3):333-344.
  46. Elofsson S, Unden AL, Krakau I: **Patient charges--a hindrance to financially and psychosocially disadvantage groups seeking care.** *Soc Sci Med* 1998, **46**(10):1375-1380.
  47. Hansson J, Galanti MR, Hergens MP, Fredlund P, Ahlbom A, Alfredsson L, Bellocco R, Eriksson M, Hallqvist J, Hedblad B *et al*: **Use of snus and acute myocardial infarction: pooled analysis of eight prospective observational studies.** *Eur J Epidemiol* 2012, **27**(10):771-779.

**Table 1** The study population

|                                                                                        | <i>Snus use</i> |             | All       |
|----------------------------------------------------------------------------------------|-----------------|-------------|-----------|
|                                                                                        | Non-current use | Current use |           |
| Participants, <i>n</i> (%)                                                             | 97 942 (75)     | 32 542 (25) | 130 485   |
| Construction Workers Cohort (CWC)                                                      | 70 310 (71)     | 28 998 (29) | 99 308    |
| Malmö Diet and Cancer Study (MDCS)                                                     | 3082 (98)       | 74 (2)      | 3156      |
| Multinational Monitoring of Trends and Determinants in Cardiovascular Disease (MONICA) | 1574 (83)       | 317 (17)    | 1891      |
| National March Cohort (NMC)                                                            | 6633 (94)       | 413 (6)     | 7046      |
| Scania Public Health Survey (Scania PHS)                                               | 2366 (86)       | 394 (14)    | 2760      |
| Stockholm Public Health Survey (Sthlm PHS)                                             | 4634 (85)       | 812 (15)    | 5446      |
| Screening Across the Lifespan Twin Study (SALT)                                        | 6499 (88)       | 870 (12)    | 7369      |
| Work, Lipids and Fibrinogen Study (WOLF)                                               | 2845 (81)       | 664 (19)    | 3509      |
| Mean age at recruitment, years                                                         | 37              | 28          | 35        |
| Mean age at diagnosis, years                                                           | 68              | 62          | 68        |
| Person-years of follow-up, <i>n</i>                                                    | 1 682 752       | 584 168     | 2 266 920 |
| Cases of stroke, <i>n</i>                                                              | 2630            | 304         | 2934      |
| Ischaemic stroke                                                                       | 1758            | 195         | 1953      |
| Haemorrhagic stroke                                                                    | 510             | 71          | 581       |
| Unspecified stroke                                                                     | 362             | 38          | 400       |

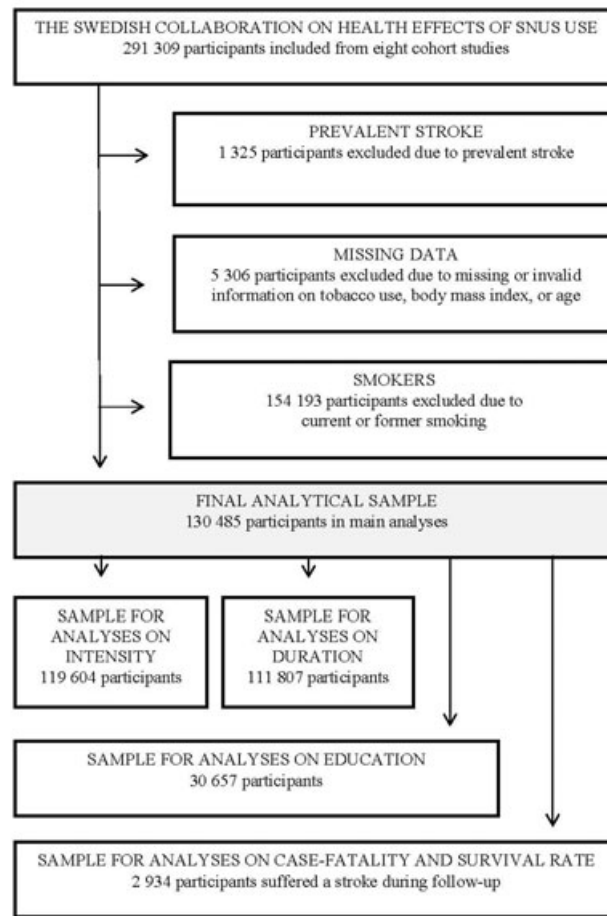
**Table 2** The included cohorts

| <i>Study</i>                                                                           | <i>Participants<br/>(n)</i> | <i>Current<br/>snus<br/>users<br/>(%)</i> | <i>Mean age<br/>at<br/>recruitment<br/>(years)</i> | <i>Mean<br/>age at<br/>diagnosis<br/>(years)</i> | <i>Person-<br/>years of<br/>follow-<br/>up</i> | <i>Mean<br/>time of<br/>follow-<br/>up<br/>(years)</i> | <i>Cases<br/>of<br/>stroke<br/>(n)</i> | <i>Cases<br/>of<br/>fatal<br/>stroke<br/>(n)</i> |
|----------------------------------------------------------------------------------------|-----------------------------|-------------------------------------------|----------------------------------------------------|--------------------------------------------------|------------------------------------------------|--------------------------------------------------------|----------------------------------------|--------------------------------------------------|
| Construction Workers Cohort (CWC)                                                      | 99 308                      | 29                                        | 30                                                 | 66                                               | 2 000 601                                      | 20                                                     | 2112                                   | 43                                               |
| Malmö Diet and Cancer Study (MDCS)                                                     | 3156                        | 2                                         | 59                                                 | 71                                               | 41 069                                         | 13                                                     | 207                                    | 3                                                |
| Multinational Monitoring of Trends and Determinants in Cardiovascular Disease (MONICA) | 1891                        | 17                                        | 46                                                 | 68                                               | 21 249                                         | 11                                                     | 59                                     | 1                                                |
| National March Cohort (NMC)                                                            | 7046                        | 6                                         | 49                                                 | 74                                               | 64 212                                         | 9                                                      | 233                                    | 9                                                |
| Screening Across the Lifespan Twin Study (SALT)                                        | 7369                        | 12                                        | 56                                                 | 66                                               | 59 122                                         | 8                                                      | 153                                    | 9                                                |
| Stockholm Public Health Survey (SthlmPHS)                                              | 5446                        | 15                                        | 46                                                 | 71                                               | 27 361                                         | 5                                                      | 63                                     | 3                                                |
| Scania Public Health Survey (Scania PHS)                                               | 2760                        | 14                                        | 45                                                 | 74                                               | 21 660                                         | 8                                                      | 81                                     | 0                                                |
| Work, Lipids and Fibrinogen Study (WOLF)                                               | 3509                        | 19                                        | 40                                                 | 55                                               | 31 646                                         | 9                                                      | 26                                     | 0                                                |
| <b>All studies</b>                                                                     | 130 485                     | 25                                        | 35                                                 | 68                                               | 2 266 920                                      | 17                                                     | 2934                                   | 68                                               |

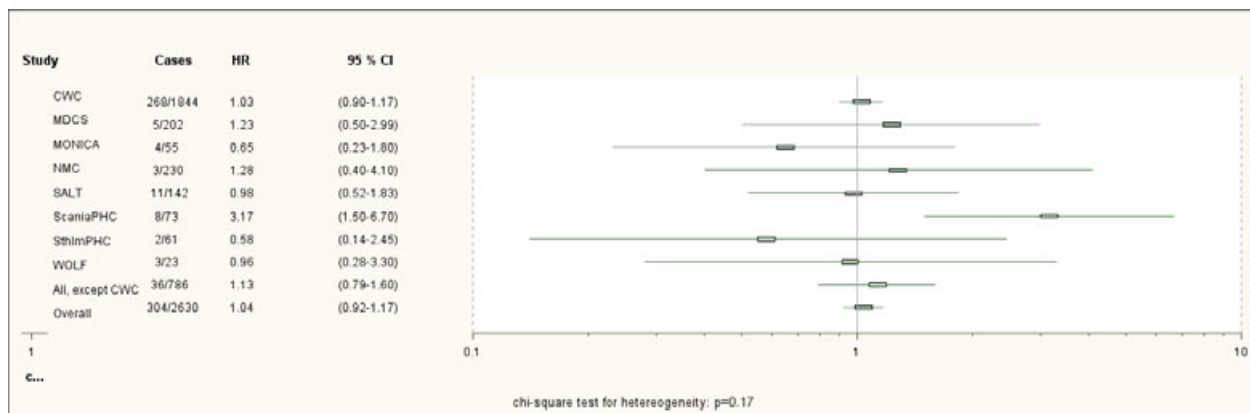
**Table 3** Pooled estimated hazard ratios (HRs) and 95% confidence intervals (95% CIs) of stroke (ischaemic, haemorrhagic, unspecified and all stroke) according to extent and duration of snus use at baseline

|               | <i>Extent of snus use<sup>a</sup></i>   |                                |                  |                                |                     |                                |                    |                                |
|---------------|-----------------------------------------|--------------------------------|------------------|--------------------------------|---------------------|--------------------------------|--------------------|--------------------------------|
|               | All types of stroke                     |                                | Ischaemic stroke |                                | Haemorrhagic stroke |                                | Unspecified stroke |                                |
|               | <i>Cases</i>                            | <i>HR (95% CI)<sup>c</sup></i> | <i>Cases</i>     | <i>HR (95% CI)<sup>c</sup></i> | <i>Cases</i>        | <i>HR (95% CI)<sup>c</sup></i> | <i>Cases</i>       | <i>HR (95% CI)<sup>c</sup></i> |
| Reference     | 2496                                    | 1.00                           | 1657             | 1.00                           | 492                 | 1.00                           | 347                | 1.00                           |
| <4 cans/week  | 235                                     | 1.05 (0.92–1.20)               | 151              | 1.06 (0.89–1.26)               | 52                  | 0.95 (0.71–1.27)               | 32                 | 1.16 (0.81–1.68)               |
| 4–6 cans/week | 26                                      | 1.00 (0.67–1.47)               | 16               | 1.02 (0.62–1.68)               | 8                   | 1.02 (0.51–2.07)               | 2                  | 0.75 (0.19–3.01)               |
| ≥7 cans/week  | 14                                      | 0.72 (0.42–1.22)               | 6                | 0.54 (0.24–1.26)               | 5                   | 0.78 (0.32–1.90)               | 3                  | 1.52 (0.49–4.79)               |
|               | <i>Duration of snus use<sup>b</sup></i> |                                |                  |                                |                     |                                |                    |                                |
|               | All types of stroke                     |                                | Ischaemic stroke |                                | Haemorrhagic stroke |                                | Unspecified stroke |                                |
|               | <i>Cases</i>                            | <i>HR (95% CI)<sup>c</sup></i> | <i>Cases</i>     | <i>HR (95% CI)<sup>c</sup></i> | <i>Cases</i>        | <i>HR (95% CI)<sup>c</sup></i> | <i>Cases</i>       | <i>HR (95% CI)<sup>c</sup></i> |
| Reference     | 2064                                    | 1.00                           | 1374             | 1.00                           | 418                 | 1.00                           | 272                | 1.00                           |
| <20 years     | 130                                     | 0.98 (0.81–1.18)               | 76               | 1.01 (0.79–1.29)               | 44                  | 0.99 (0.71–1.38)               | 10                 | 0.79 (0.41–1.51)               |
| ≥20 years     | 152                                     | 1.05 (0.89–1.23)               | 103              | 1.05 (0.85–1.28)               | 24                  | 0.89 (0.59–1.35)               | 25                 | 1.26 (0.83–1.89)               |

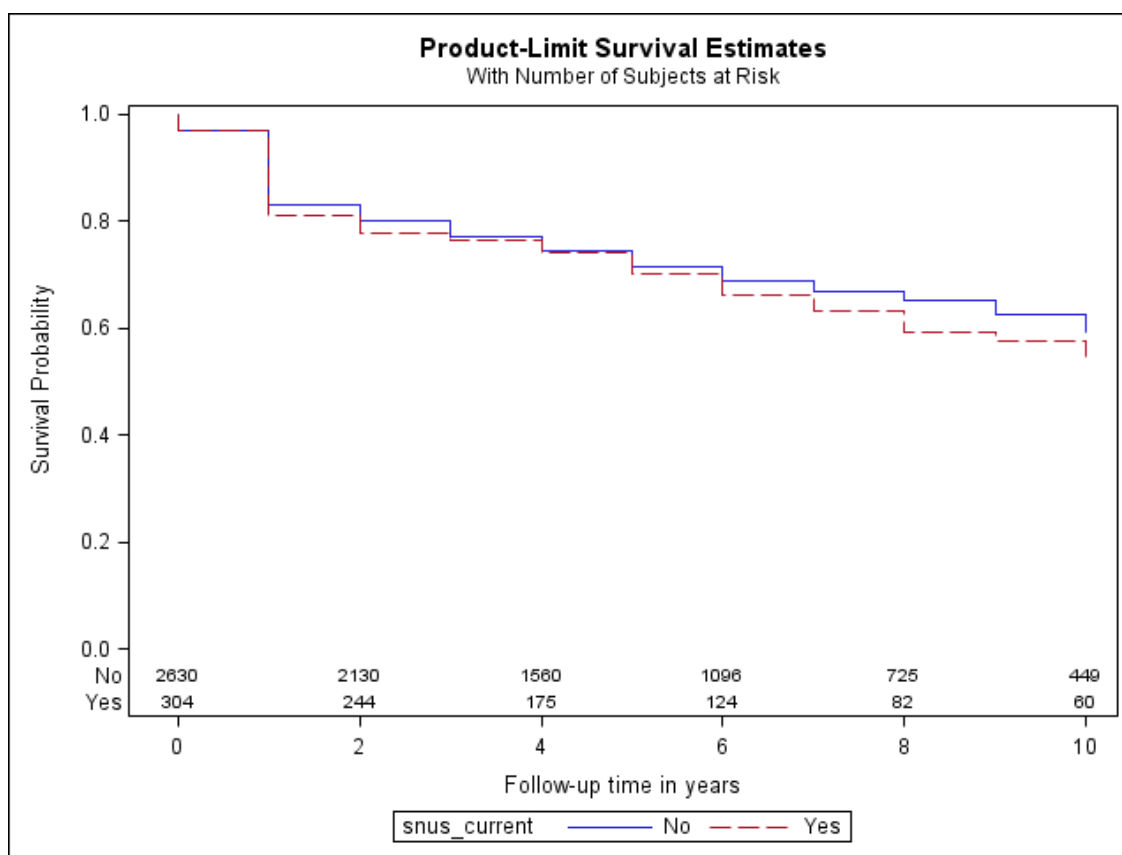
<sup>a</sup>Based on the CWC, MDCS, MONICA, NMC, SALT and WOLF cohorts; <sup>b</sup>based on the CWC, MONICA, SALT and WOLF cohorts; <sup>c</sup>adjusted for age and BMI.



**Fig. 1** Basis of analytical samples.



**Fig. 2** Study-specific and pooled estimated hazard ratios (HRs) and 95% confidence intervals (CIs) of stroke during follow-up among never smokers who used snus at baseline versus non-snus users



**Fig. 3** Kaplan–Meier survival distribution in current and non-current snus users who experienced a stroke (log rank test:  $P = 0.30$ ).